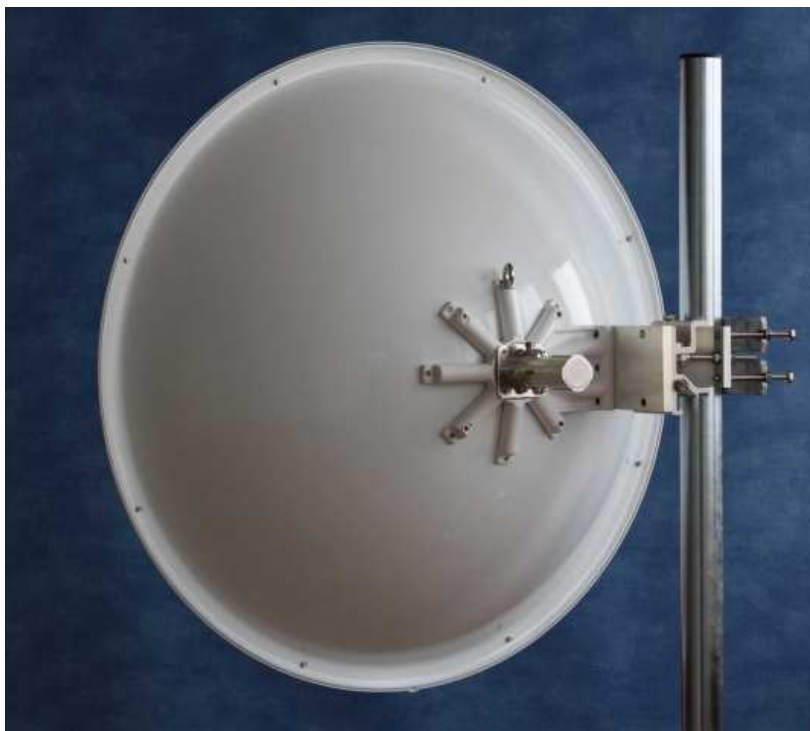


Dual-polarized parabolic antenna JRC-32 DuplEX Precision



Antenna JRC-32 DuplEX Precision is the newest duplex antenna from Jirous for very long and affordable duplex microwave links.

Usage:

- dual-polarized antenna, horizontal and vertical polarization
- **the highest isolation! 53 dB**
- only **1 antenna instead 2 save money** for mast!
- extra high front to back ratio
- direction links for long and medium distance, also short in difficult conditions
- **easy to assembly:** first only the holder and then the antenna only by 2 screws
- **fine setting** elevation (of gradient) and azimuth $\pm 20^\circ$
- **right and left assembling**
- **extrem wind stability**
- VSWR and isolation are measured during the manufacture of **every piece**
- outdoor usage
- you can count attainable distance from [section of calculation](#)
- **radom** (plastic parabola cover) **for each antenna free!**

Technical parameters

Frequency range	5,45 - 5,85 GHz
Gain	32,2 \pm 0,6dBi
VSWR	$\leq 1,5$
Isolation between connectors	53dB (≥ 45 dB)
Front to back ratio	≥ 43 dB
Beamwith_{-3 dB}	4,1° (-3 dB)
Connector	N - Female - <i>JRC-32DuplEX</i> R-SMA - <i>JRC-32DuplEX-SMA</i>
Polarization	linear, horizontal and vertical or 45°
Parabola	\varnothing 90 cm
Cover	aluminium alloy with baking colour UV steady plastic ABS
Installation for mast	\varnothing 40 - 120 mm
Antenna weight	10,65 Kg.
Holder weight	3,25 Kg.

The radiator is internally treated by high frequency technology "**Hydrophobic coating**" which increases resistance against humidity.

Recommended accessories:

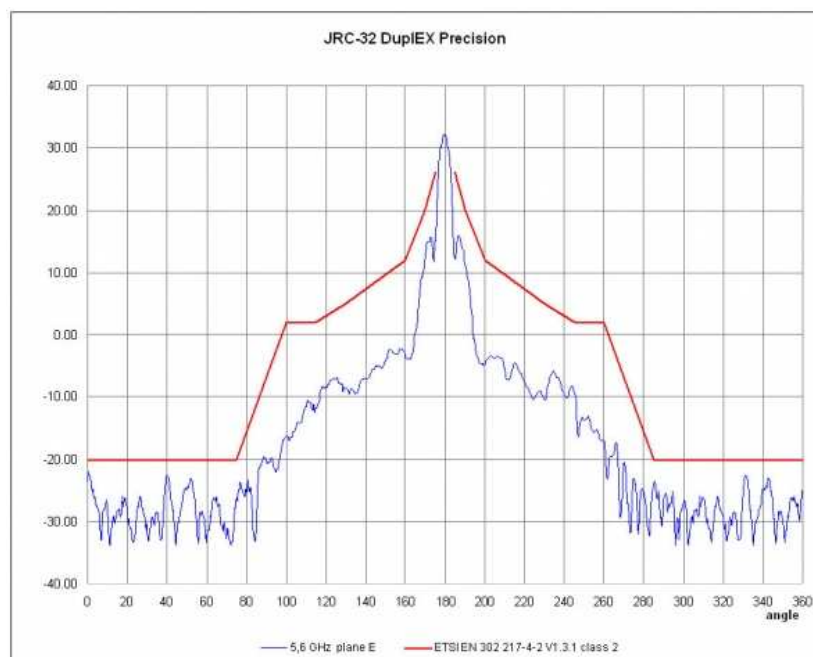
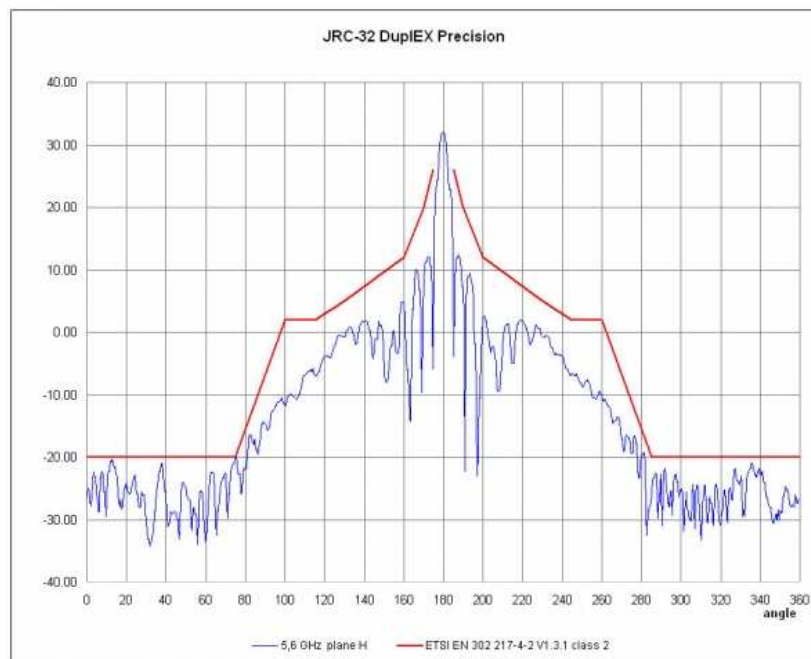
- Using with [GentleBOX JR-300](#) we recommend JRC-32DuplEX-SMA with **R-SMA** connectors. Using "N" you need 1 pcs of [Adaptor N right angle](#) at horizontal connector.
- [Pigtail R-SMA/MMCX](#) for JRC-32DuplEX-SMA Precision
- [Pigtail R-SMA/UF.L](#) for JRC-32DuplEX-SMA Precision

Facilities for application:



- duplex direction link

Diagram:



More Photo:

